

FILTROS DE BOLSAS RÍGIDAS



| Codigo | Modelo | Dimensiones (mm) (AxBxC) | Eficacia | Caudal (m ³ /h) | Pérdida carga inicial (mm.c.a.) | Unidades en Stock | € Neto |
|-----------------------|-----------------|--------------------------|----------|----------------------------|---------------------------------|-------------------|--------------|
| FILTRA-PAK RP | | | | | | | |
| KF 09 301 | RPG 55 | 595x287x292 | F6 | 2.100 | 10,5 | 18 | 34,80 |
| KF 09 302 | RPG 56 | 595x490x292 | F6 | 3.400 | 10,5 | 3 | 46,98 |
| KF 09 303 | RPG 54 | 595x595x292 | F6 | 4.250 | 10,5 | 4 | 51,04 |
| KF 09 304 | RPF 55 | 595x287x292 | F7 | 2.100 | 12,5 | 22 | 37,70 |
| KF 09 305 | RPF 56 | 595x490x292 | F7 | 3.400 | 12,5 | 2 | 52,20 |
| KF 09 306 | RPF 54 | 595x595x292 | F7 | 4.250 | 12,5 | 5 | 54,52 |
| KF 09 321 | RPL 55 | 595x287x292 | F8 | 2.100 | 15 | 39 | 38,86 |
| KF 09 320 | RPL 54 | 595x595x292 | F8 | 4.250 | 15 | 38 | 55,67 |
| KF 09 307 | RPH 55 | 595x287x292 | F9 | 2.100 | 16 | 25 | 40,02 |
| KF 09 311 | RPR 56 | 595x490x292 | H10 | 3.400 | 17 | 14 | 63,80 |
| KF 09 312 | RPR 54 | 595x595x292 | H10 | 4.250 | 17 | 1 | 68,44 |
| FILTRA-PAK RPE | | | | | | | |
| KF 09 086 | RPE-G 54 | 595x595x292 | F6 | 3.400 | 7 | 4 | 43,50 |
| KF 09 087 | RPE-G 55 | 289x595x292 | F6 | 1.650 | 7 | 5 | 26,10 |
| KF 09 088 | RPE-G 56 | 490x595x292 | F6 | 2.800 | 7 | 5 | 39,44 |
| KF 09 089 | RPE-G 54 | 595x595x292 | F7 | 3.400 | 9 | 10 | 44,66 |
| KF 09 090 | RPE-G 55 | 289x595x292 | F7 | 1.650 | 9 | 6 | 27,84 |
| KF 09 091 | RPE-G 56 | 490x595x292 | F7 | 2.800 | 9 | 5 | 40,60 |
| KF 09 092 | RPE-G 54 | 595x595x292 | F8 | 3.400 | 10 | 9 | 46,40 |
| KF 09 093 | RPE-G 55 | 289x595x292 | F8 | 1.650 | 10 | 10 | 29,00 |
| KF 09 094 | RPE-G 56 | 490x595x292 | F8 | 2.800 | 10 | 1 | 41,76 |
| KF 09 095 | RPE-G 54 | 595x595x292 | F9 | 3.400 | 12 | 2 | 48,14 |
| KF 09 096 | RPE-G 55 | 289x595x292 | F9 | 1.650 | 12 | 10 | 30,74 |
| KF 09 097 | RPE-G 56 | 490x595x292 | F9 | 2.800 | 12 | 5 | 43,50 |
| FK 09 205 | RPG 55P | 287x595x75 | F6 | | | 29 | 39,44 |
| FK 09 206 | RPG 54P | 595x595x75 | F6 | | | 39 | 64,38 |
| FK 09 297 | RPF 54-P | 595x595x75 | F7 | | | 20 | 58,24 |
| FK 09 298 | RPF 55-P | 287x595x75 | F7 | | | 19 | 41,41 |

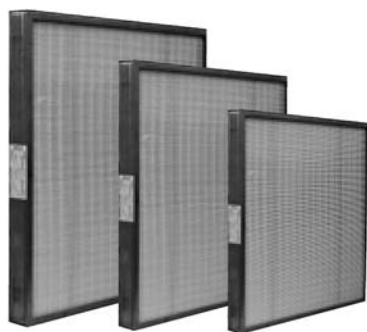
FILTROS DE ALTA EFICACIA



| Codigo | Modelo | Dimensiones (mm) (AxBxC) | Eficacia | Caudal (m ³ /h) | Pérdida carga inicial (mm.c.a.) | Unidades en Stock | € Neto |
|-----------------------|--------------|--------------------------|----------|----------------------------|---------------------------------|-------------------|--------------|
| SIGMA | | | | | | | |
| MARCO METÁLICO | | | | | | | |
| KF 09 349 | KG 42 | 305x610x149 | F6 | 1.000 | 8,5 | 1 | 42,41 |
| KF 09 367 | KH 52 | 305x610x292 | F8 | 1.700 | 13 | 8 | 68,51 |
| KF 09 368 | KH 5 | 610x610x292 | F8 | 3.400 | 13 | 1 | 98,52 |
| MARCO MADERA | | | | | | | |
| KF 09 345 | LG 42 | 305x610x149 | F6 | 1.000 | 8,5 | 1 | 44,37 |
| KF 09 347 | LG 52 | 305x610x292 | F6 | 1.700 | 8,5 | 1 | 64,59 |
| KF 09 353 | LF 42 | 305x610x149 | F7 | 1.000 | 11 | 1 | 46,98 |
| FK 09 351 | KH 52 | 305x610x292 | F9 | | | 2 | 68,51 |

FILTROS PLANOS DE ALTA EFICACIA PFO/6, PFO/7, PFO/8, PFO/9.

SagiCofim
Ecoefficiency for Indoor Air Quality



DESCRIPCIÓN:

Los filtros PFO son filtros planos de alta eficacia. Están formados por un marco de chapa galvanizada que monta una manta filtrante de fibra de vidrio dispuesta en pequeños pliegues.

APLICACIONES:

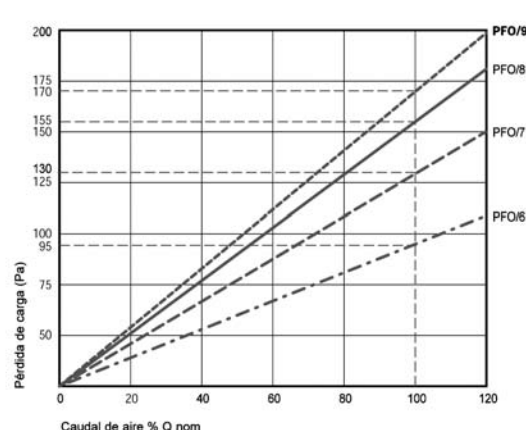
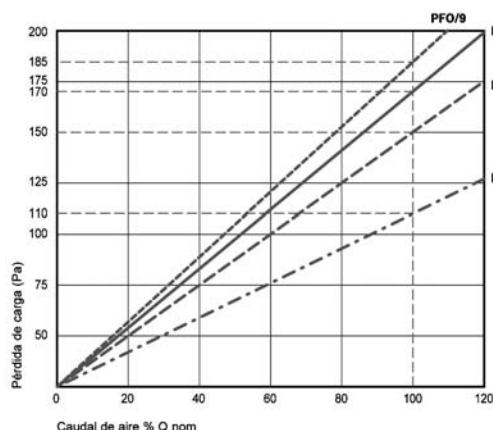
Los filtros PFO se usan en las instalaciones civiles e industriales que requieren una alta eficiencia de filtración (F6, F7, F8, F9) y unos niveles de pureza de aire muy elevados. Especialmente indicados para cumplir con el RITE, cuando por problemas de espacio, no sea posible colocar filtros de bolsas rígidas.

INSTALACIÓN:

Los filtros PFO/6 - PFO/7 - PFO/8 - PFO/9 se montan normalmente en posición perpendicular al flujo de aire, manteniendo los pliegues de la manta en vertical. La instalación se realiza dentro de un contenedor en forma de U, un portafiltras o en contramarcos (mod. CT) de manera que favorezca la sustitución al final de su vida útil.

| Producto | PFO/6 | PFO/7 | PFO/8 | PFO/9 |
|-----------------------------------|--------|--------|--------|--------|
| Clase UNI EN 779:2005 | F 6 | F 7 | F 8 | F 9 |
| Clase EUROVENT | EU 6 | EU 7 | EU 8 | EU 9 |
| Perdida de carga final aconsejada | 200 Pa | 200 Pa | 300 Pa | 300 Pa |
| Perdida de carga máxima | 450 Pa | 450 Pa | 450 Pa | 450 Pa |
| Temperatura máxima de trabajo | 70°C | 70°C | 70°C | 70°C |
| Humedad relativa máxima | 100% | 100% | 100% | 100% |

| Código | Modelo | Dimensiones | Eficacia | Caudal (m³/h) | Pérdida inicial (Pa) | Unidades en Stock | € Neto |
|-----------|--------|-------------|----------|---------------|----------------------|-------------------|--------|
| KF 09 064 | PFO/6 | 592x490x48 | F6 | 2400 | 110 | 4 | 19,41 |
| KF 09 066 | PFO/7 | 287x592x48 | F7 | 1500 | 150 | 1 | 17,47 |
| KF 09 069 | PFO/8 | 287x592x48 | F8 | 1500 | 170 | 11 | 18,76 |
| KF 09 070 | PFO/8 | 592x490x48 | F8 | 2400 | 170 | 9 | 22,00 |
| KF 09 071 | PFO/9 | 592x592x48 | F9 | 3000 | 185 | 19 | 27,82 |
| KF 09 072 | PFO/9 | 287x592x48 | F9 | 1500 | 185 | 13 | 20,06 |
| KF 09 074 | PFO/6 | 592x592x96 | F6 | 3000 | 95 | 6 | 37,40 |
| KF 09 075 | PFO/6 | 287x592x96 | F6 | 1500 | 95 | 13 | 24,33 |
| KF 09 077 | PFO/7 | 592x592x96 | F7 | 3000 | 130 | 25 | 38,82 |
| KF 09 078 | PFO/7 | 287x592x96 | F7 | 1500 | 130 | 16 | 24,98 |
| KF 09 080 | PFO/8 | 592x592x96 | F8 | 3000 | 155 | 17 | 39,86 |
| KF 09 081 | PFO/8 | 287x592x96 | F8 | 1500 | 155 | 19 | 25,88 |
| KF 09 083 | PFO/9 | 592x592x96 | F9 | 3000 | 170 | 18 | 40,12 |
| KF 09 084 | PFO/9 | 287x592x96 | F9 | 1500 | 170 | 17 | 26,53 |



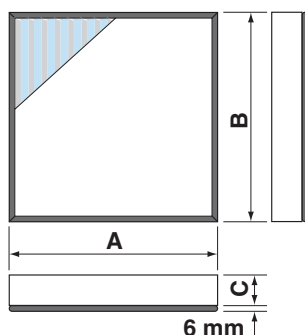
FILTROS ABSOLUTOS TEMPERATURAS ELEVADAS

SagiCofim
Ecoefficiency for Indoor Air Quality



| Codigo | Modelo | Dimensiones (mm) (AxBxC) | Eficacia | Caudal (m ³ /h) | Pérdida carga inicial (mm.c.a.) | Unidades en Stock | € Neto |
|----------------------------------|--------|--------------------------|----------|----------------------------|---------------------------------|-------------------|--------|
| DELTA TB | | | | | | | |
| • Temperatura en continuo: 245°C | | | | | | | |
| KF 09 498 | TB 5 | 610x610x292 | H12 | 2.000 | 25 | 2 | 525,90 |

FILTROS ABSOLUTOS PARA FLUJO LAMINAR



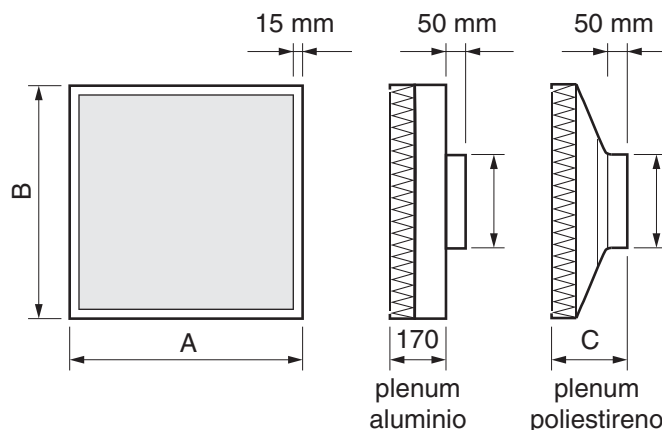
| Codigo | Modelo | Dimensiones (mm) (AxBxC) | Eficacia | Caudal (m ³ /h) | Pérdida carga inicial (mm.c.a.) | Unidades en Stock | € Neto |
|-----------------|--------|--------------------------|----------|----------------------------|---------------------------------|-------------------|--------|
| DELTA AB | | | | | | | |
| KF 09 553 | AB 42 | 305x610x69 | H14 | 300 | 12 | 4 | 61,29 |
| KF 09 559 | AB 7 | 762x610x69 | H14 | 750 | 12 | 8 | 109,40 |
| KF 09 560 | AB 8 | 915x610x69 | H14 | 900 | 12 | 21 | 129,82 |
| KF 09 561 | AB 9 | 1219x610x69 | H14 | 1.200 | 12 | 24 | 163,43 |
| KF 09 565 | AB 72 | 915x762x69 | H14 | 1.130 | 12 | 1 | 75,92 |
| KF 09 566 | AB 73 | 1219x762x69 | H14 | 1.500 | 12 | 2 | 201,00 |
| KF 09 569 | AB 82 | 915x915x69 | H14 | 1.360 | 12 | 1 | 186,50 |
| FK 09 014 | AB 42 | 610x305x150 | | | | 1 | 67,02 |
| FK 09 212 | ABSPB5 | 592x1219x74 | H14 | | | 20 | 155,94 |
| FK 09 224 | AB 83 | 1219x915x69 | H14 | | | 1 | 273,45 |
| FK 09 294 | | 700x560x90 | H14 | | | 2 | 268,56 |
| FK 09 295 | AB75 | 1829x762x69 | H14 | | | 2 | 330,93 |

UNIDAD TERMINAL SELLADA EN FÁBRICA

SagiCofim
Ecoefficiency for Indoor Air Quality

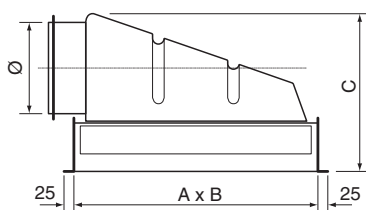


| Codigo | Modelo | Dimensiones (mm) (AxBxC) | Eficacia | Caudal (m ³ /h) | Pérdida carga inicial (mm.c.a.) | unidades en Stock | € Neto |
|----------------|----------|--------------------------|----------|----------------------------|---------------------------------|-------------------|--------|
| DUG - B | | | | | | | |
| KF 09 601 | DUG-B 42 | 305x610x220 | H14 | 300 | 13 | 6 | 99,17 |
| KF 09 602 | DUG-B 4 | 610x610x220 | H14 | 600 | 13 | 3 | 135,07 |
| KF 09 603 | DUG-B 9 | 610x1219x220 | H14 | 1.200 | 13 | 5 | 220,54 |
| FK 09 240 | DUG-B 9T | 1220x610x220 | H14 | | | 4 | 233,77 |



UNIDAD TERMINAL PORTA FILTROS ABSOLUTOS

SagiCofim
Ecoefficiency for Indoor Air Quality



| Código | Modelo | Dimensiones (mm) (AxBxC) | Conexión (mm) | Caudal (m ³ /h) | Pérdida carga inicial (mm.c.a.) | Unidades en Stock | € Neto |
|------------------------------------|-----------------|--------------------------|---------------|----------------------------|---------------------------------|-------------------|---------------|
| DIF.P (PLENUM POLIESTIRENO) | | | | | | | |
| • Difusor FL | | | | | | | |
| KF 09 626 | DIF.P 42 | 332x637x360 | 173 | 300 | 2 | 14 | 153,33 |
| KF 09 629 | DIF.P 8 | 941x637x420 | 247 | 900 | 3 | 9 | 208,79 |
| KF 09 630 | DIF.P 9 | 1246x637x420 | 247 | 1.200 | 3 | 11 | 242,72 |
| FK 09 056 | DIF-P 9 | 1246x637x420 | | | | 2 | 281,87 |
| FK 09 080 | DIF-P | 332x332x360 | | | | 3 | 134,41 |
| FK 09 116 | DIF-P 44 | 534x534x365 | | | | 4 | 165,08 |
| FK 09 144 | WT | | | | | 2 | 88,92 |

* ATENCIÓN: FILTRO ABSOLUTO NO INCLUIDO



Difusor FL



Difusor WT

FILTROS SEMIABSOLUTOS

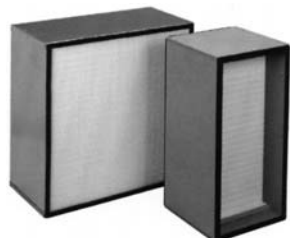
SagiCofim
Ecoefficiency for Indoor Air Quality



| Código | Modelo | Dimensiones (mm) (AxBxC) | Eficacia | Caudal (m ³ /h) | Pérdida carga inicial (mm.c.a.) | Unidades en Stock | € Neto |
|---------------------|--------|--------------------------|----------|----------------------------|---------------------------------|-------------------|--------------|
| BETA | | | | | | | |
| MARCO MADERA | | | | | | | |
| KF 09 422 | LR 4 | 610x610x149 | H10 | 1.700 | 13 | 11 | 78,95 |

FILTROS ABSOLUTOS COMPACTOS

SagiCofim
Ecoefficiency for Indoor Air Quality

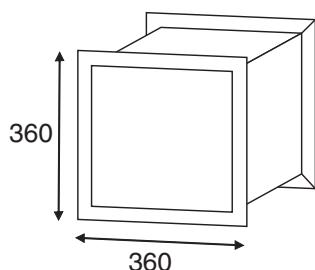


| Código | Modelo | Dimensiones (mm) (AxBxC) | Eficacia | Caudal (m ³ /h) | Pérdida carga inicial (mm.c.a.) | Unidades en Stock | € Neto |
|-----------------------|--------|--------------------------|----------|----------------------------|---------------------------------|-------------------|---------------|
| DELTA | | | | | | | 238,81 |
| MARCO METÁLICO | | | | | | | |
| FK 09 122 | NA 5 | 610x610x292 | H14 | | | 1 | |

CONTENEDOR DE CONDUCTO PARA FILTROS

SagiCofim
Ecoefficiency for Indoor Air Quality

RP-I 3



| Código | Modelo | Dimensiones (a x b x c) mm | Unidades en Stock | € Neto |
|-----------|--------|----------------------------|-------------------|--------|
| KF 09 791 | MD-32 | 360 x 360 x 400 | 12 | 150,00 |

FILTROS CARBON ACTIVO

SagiCofim
Ecoefficiency for Indoor Air Quality



Filtro bolsas rígidas en plástico VAR



Filtro de cartucho CAB

• Filtros intercalables en conducto

| Código | Artículo | Medidas | Caudal nominal m ³ /h | Pérdida de carga mm.cda | Unidades en Stock | € Neto |
|------------------------------------------|------------------------------|-------------|----------------------------------|-------------------------|-------------------|--------|
| FILTRO BOLSAS RÍGIDAS EN PLÁSTICO | | | | | | |
| KF 08 016 | Filtro carbon activo VAR 05 | 592x592x292 | 3400 | 15 | 21 | 227,20 |
| KF 08 017 | Filtro carbon activo VAR 06 | 287x592x292 | 1700 | 15 | 4 | 153,43 |
| FILTRO DE CARTUCHO | | | | | | |
| KF 08 032 | Filtro de cartucho CAB 2/2,0 | 600x600x300 | 1800 | 20 | 8 | 460,65 |