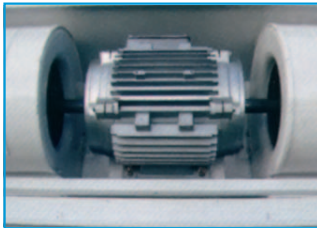


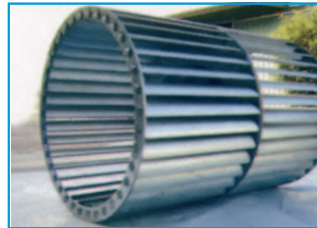
**06 CENTRIFUGAL INDUSTRIAL
AIR CURTAIN
MU-ECO GC Series**



- Centrifugal fan
- Accurate high efficiency design
- Low noise level
- Powerful air flow
- High static pressure
- No inflammable metal casing
- Max. installation height: 6 m
- Easy to install



Dual axis motor



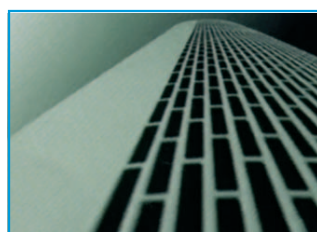
Metal fan



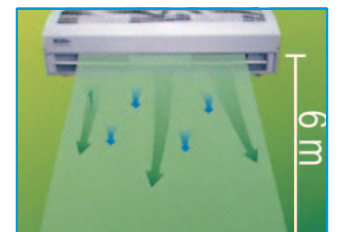
Metal fan casing



Powerful centrifugal fan



Metal casing



Max. installation height:
6 m

TECHNICAL DATA:

Part No.	Model	Length (mm)	Power supply	Installation height (m)	Power consumption (kw)	Absorbed current (A)	Air speed (m/s)	Air flow (m ³ /s)	Noise level (dB)	Dimensions
EC 06 420	MU-ECO 10 GC	1000	380V 50HZ 3 PH	5-6	1.1	4.12/2.55	28	3709	72	1053x374x365
EC 06 424	MU-ECO 12 GC	1200			1.1	4.12/2.55		3709		1255x374x365
EC 06 425	MU-ECO 15 GC	1500			1.85	7.15/4.30		5563		1555x374x365